



DESIGNED SMART. BUILT TOUGH.™

MODEL 34c



until now, an
INITIAL ATTACK ENGINE
was just a brush truck

Designed to meet the demanding specifications of CAL FIRE, the all new Model 34c initial attack engine is specifically designed for the rigors of on and off road wildland interface firefighting.

The rig has a 500-GPM two-stage PTO pump for stationary operations, a Diesel powered auxiliary pump for pump and roll operations and carries 500-gallons of water in a lifetime warranty tank.

Built exclusively by HME, the new Model 34c has our rugged stainless steel body with an ergonomic design that lowers the ladder and suction hose storage, and puts tools within easy reach.

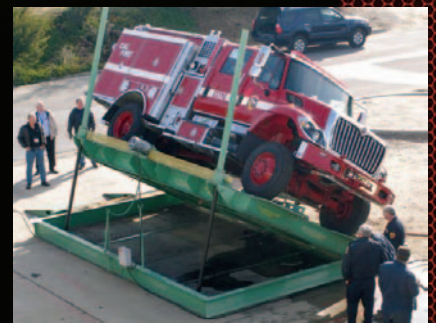
If you are looking for the most rugged and versatile initial attack engine on the market, check out the HME Ahrens-Fox Model 34c.

www.firetrucks.com

The Model 34c is equipped with a two stage, 500-GPM midship pump that has the capability for supplying long hose lays common in interface fire operations. Its 180-GPM Diesel powered auxiliary pump has control mounted in the cab and supplies two front jump lines as well as the booster reel and preconnect discharges for pump and roll operations. An on board Class A foam system is supplied from a 20-gallon removable tank.

The all new Model 34c features low storage compartments for ladders, long handle tools and three sections of suction hose. Additional compartmentation for deployment gear is provided in the center of the large hose bed. The all stainless steel body is flex mounted to withstand the twists and torture of off road operations and its 500-gallon tank is completely separate and removable for maintenance.

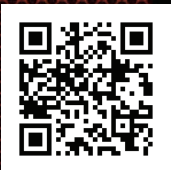
The HME Ahrens-Fox Model 34c initial attack engine is certified to meet the stability requirements of CAL FIRE and the National Park Service standards.



Model 34c initial attack engine has been carefully
ENGINEERED
and thoroughly **TESTED**

HME, Incorporated

1950 Byron Center Avenue Wyoming, Michigan 49519
616.534.1463



Technical specifications, product images and descriptions are accurate at the time of publication and are subject to change without notice. Product images may include custom options that may not come standard.

EM0111-5